

From group to battalion . . .

REDSTONE REORGANIZED

Captain George M. Rodgers
Tactics/Combined Arms Department

(I have slightly edited and reformatted the original article as it appears on page 32 of the February 1962 edition of ARTILLERY TRENDS: Jim Ryan, 24 August 2010)

With the reorganization of the US Army comes a new organization for Redstone. The most obvious and significant change is that from a group to a battalion. The battalion will be assigned to a field army on a basis of one battalion per army. The overall mission of Redstone remains the same: to provide field artillery missile nuclear fire in general support of the field army.

More specifically, it will be the Redstone battalion's job to deliver nuclear fire on targets beyond the range of other field artillery units, to accomplish mass destruction on large area targets, to afford continuous fire support by displacing its two missile batteries by echelon, and finally, to provide organizational supply and maintenance for the complete missile system. Figure 26 reflects the changes in personnel authorizations incident to the change in the Redstone organization.

THE REDSTONE BATTALION

The Redstone battalion (figure 20) is composed of a headquarters and headquarters battery, two field artillery missile batteries, an engineer company, and an ordnance company. The battalion is organized under the battalion fire unit principle, which simply means that the battalion, rather than the battery, is the fire unit. Like other artillery battalions, the Redstone battalion is also the tactical and administrative organization.

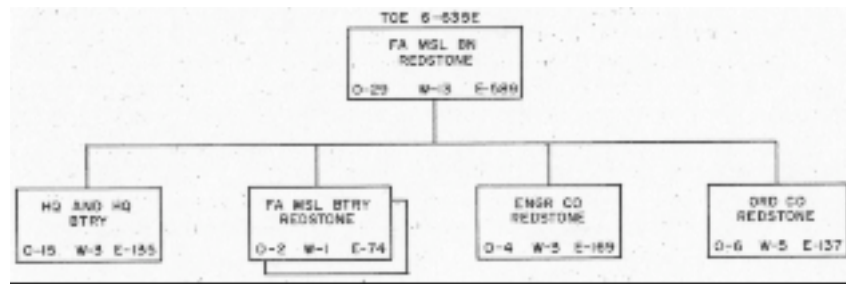


Figure 20. Field artillery missile battalion, Redstone.

The Redstone battalion staff (figure 21) consists of 14 officers and 1 enlisted man. For the most part, the duties of these staff members are comparable to the traditional duties of their counterparts in cannon artillery units. The assignment of an engineer company and an ordnance company to the battalion places certain additional responsibilities on the battalion commander. For example, he must be familiar with the capabilities and limitations of all units within the battalion (engineer and ordnance as well as artillery) so that he can properly advise the next higher commander on employment of the battalion. He may even be required to assist the next higher commander in the selection of targets for his battalion. In addition the S3, on receipt of a fire mission, must coordinate the activities not only of the firing batteries but also of the engineer and ordnance companies.

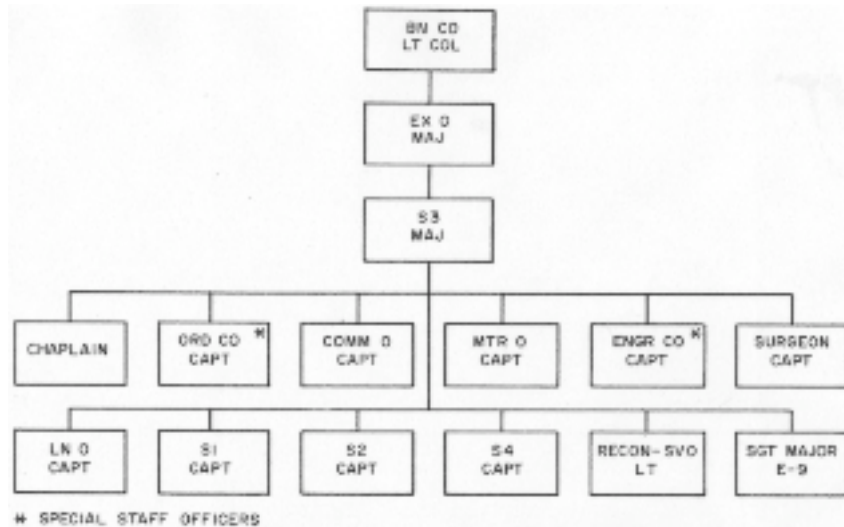


Figure 21. Redstone battalion staff.

HEADQUARTERS AND HEADQUARTERS BATTERY

The headquarters and headquarters battery (figure 22) contains the necessary administrative and service elements to support the battalion and, when augmented by the security detachment, provides security personnel for safeguarding nuclear warheads.

The *battery headquarters* consists of the personnel and equipment necessary for the administrative and tactical control of the headquarters battery.

The *operations and intelligence platoon* contains a platoon headquarters, an administrative section, and a survey section.

The *platoon headquarters* consists of the necessary personnel and equipment to perform the functions of fire direction and liaison. The platoon headquarters can support two fire direction centers, thus allowing fire direction operations to be performed at each firing battery if necessary. The platoon headquarters has a liaison sergeant and the necessary liaison communications to assist the battalion liaison officer.

The *administrative section* consists of the personnel and equipment to support the battalion commander and staff in administrative matters.

The *survey section* is composed of two field artillery survey teams, which furnish the firing batteries with the required survey control. Survey control should be furnished to within approximately 1,000 meters of each firing position by an engineer topographic battalion or a field artillery target acquisition battalion.

The *battalion communication platoon* is equipped to provide communications to the subordinate units and to higher headquarters when necessary. Each subordinate unit establishes its own internal communication system.

The functions of the *battalion personnel, maintenance, and medical sections* are comparable to those of cannon battalion personnel, maintenance, and medical sections.

The *battalion supply section* consists of the personnel and equipment to handle the supply functions normally performed by a cannon battalion supply section.

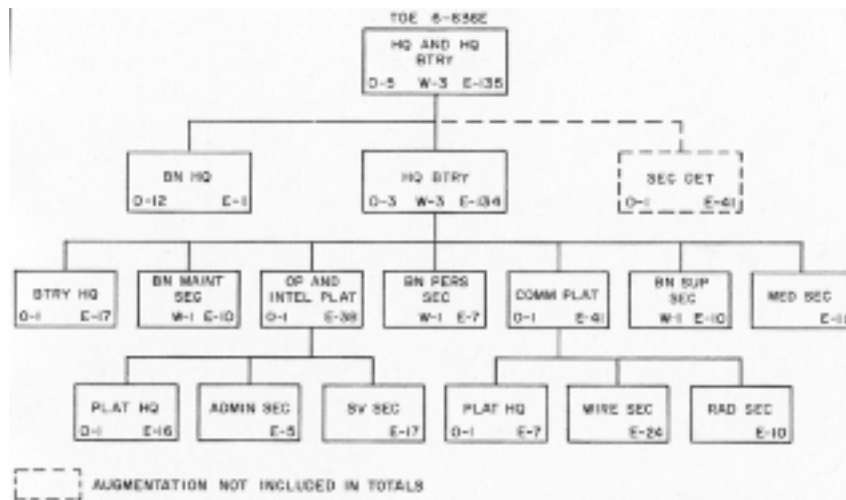


Figure 22. Headquarters and headquarters battery.

MISSILE FIRING BATTERIES

There are two missile batteries organic to the battalion. Each battery (figure 23) is composed of a battery headquarters, a communication section, and a firing battery.

The *battery headquarters* contains the necessary equipment and administrative, supply, maintenance, and mess personnel to perform battery administrative, supply, maintenance, and mess functions. The *communication section* consists of the personnel and equipment to operate and maintain the battery communication system.

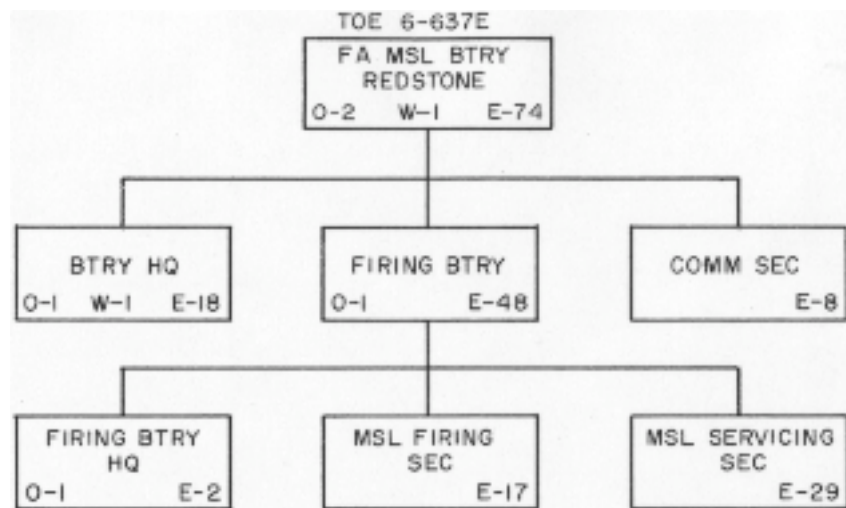


Figure 23. Field artillery missile battery, Redstone.

The *firing battery* has a headquarters for control, a missile firing section, and a missile servicing section.

The *firing section* consists of the necessary personnel to operate the air compressor truck, air servicer, missile test and fire control equipment, and auxiliary equipment. The firing section, in general, performs all operations pertaining to electrical cabling, pneumatic line installation, missile testing, and missile pressurization.

The *missile servicing section* consists of the necessary personnel to maintain the launcher, lightweight erection equipment, missile and propellant transport vehicles, and firefighting equipment. The servicing section, in general, performs all operations pertaining to missile and fuel transport; missile assembly, other than intercabling; missile erection; and missile fueling. Each missile battery has one launcher, giving the battalion a two-launcher firing capability.

THE ENGINEER COMPANY

The engineer company, Redstone (fig 24), is composed of a company headquarters, a maintenance platoon, and two liquid oxygen-generating platoons. Furthermore, the engineer company will be augmented, when authorized, with a liquid nitrogen (LN2) supply section or a carbon dioxide (CO2) generating section.

The *company headquarters* is the command and administrative element of the company. It provides mess, supply, and administrative facilities for the personnel of the unit.

The *maintenance platoon* is responsible for the field maintenance of mechanical engineer items in the battalion. It provides engineer maintenance contact teams for repair at the firing position; the teams are on a stand-by basis during fire missions. The platoon also performs second-echelon maintenance on its organic ordnance and engineer equipment.

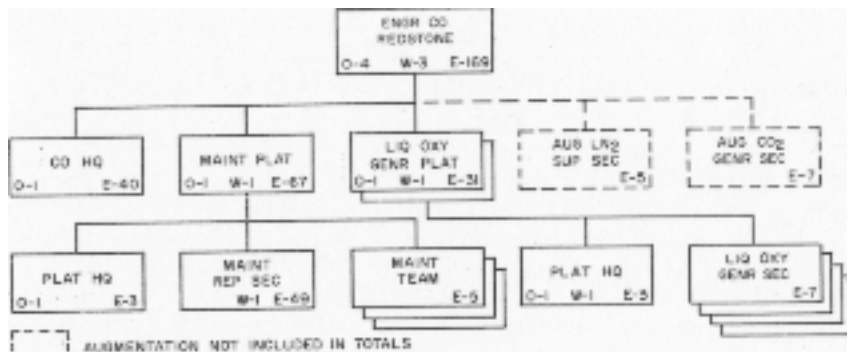


Figure 24. Engineer company, Redstone.

The *liquid oxygen generating platoons* generate, store, and transport liquid oxygen. In addition, these platoons perform preventive maintenance on all their operating equipment and produce liquid nitrogen as required.

The *augmentation liquid nitrogen (LN2) supply section* is equipped with four skid-mounted oxygen storage (3/4-ton) tanks, each carried in a 1&1/2-ton trailer and pulled by a 2&1/2-ton truck, and one semi trailer-mounted 9-ton liquid oxygen storage tank pulled by a 5-ton truck tractor. These vehicles and tanks are used for the transport and storage of LN2 required for Block II missiles.

The *augmentation carbon dioxide (CO2) generating section* is equipped with necessary facilities to produce and store dry ice (CO2) required for Block I missiles.

THE ORDNANCE COMPANY

The ordnance company, Redstone (fig 25), is composed of a company headquarters, an operations section, a missile maintenance platoon, a supply platoon, an automotive maintenance platoon, and a firing trainer section.

The *company headquarters* is the command and administrative element of the company. It provides mess, unit supply, and administrative facilities for the personnel of the unit except that administration required for personnel management.

The *operations section* is the focal point for all mission activities performed by the unit. The operations officer is the coordinator for all maintenance and supply activities. The master control records for maintenance and this section maintains supply functions, and the section coordinates requests for special contact teams.

The *missile maintenance platoon* provides missile system maintenance. It supplies the contact teams to work outside the physical confines of the unit shop; e.g., at the firing batteries and ordnance unit storage points. The main functions of this platoon include pre-issue inspections, component repair, and in-storage inspections.

The *supply platoon* performs all supply functions within the unit with the exception of unit supply. These functions include the supply of major Redstone items and missile fuel, and the supply of repair parts to the operating sections of the ordnance company and the firing batteries.

The *automotive maintenance platoon* is responsible for all supporting functions of the unit, such as machine shop facilities, welding facilities, wrecker service, and field maintenance for automotive equipment. The platoon provides special personnel and equipment to the contact teams as deemed necessary for the performance of a particular task.

The *Redstone trainer section* operates and maintains the Redstone trainer and furnishes training support to the firing batteries as directed by the battalion S3.

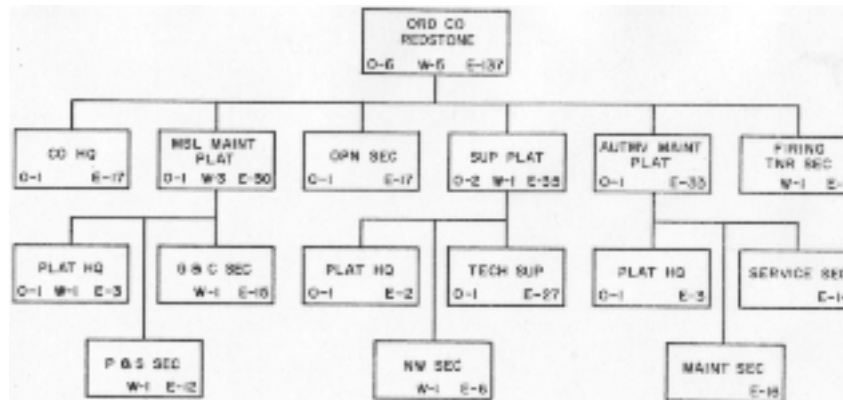


Figure 25. Ordnance company, Redstone.

This is the new Redstone organization, the **Field Artillery Missile Battalion, Redstone**, which has the mission of providing missile nuclear fire in general support of the US field army. The Redstone battalion, an extremely hard-hitting, reliable organization that is responsive to the requirements of the army commander, can influence the actions on the battlefield to a depth and to a degree never before possible.

REDSTONE BATTALION			
ADDITIONS	DELETIONS	ADDITIONS	DELETIONS
1. To total strength—15 enlisted men.	1. From total strength—3 Officers and 1 Warrant Officer.	1. Medical Section. 2. Mess Personnel.	Headquarters Battery 1. Mess Section.
Headquarters and Headquarters Battery 1. To total strength—6 EM. 2. Augmentation Security Detachment (1 Off, 41 EM).	1. Medical section.	Missile Battery 1. To total strength—13 EM. 2. To battery headquarters—mess, maintenance, and headquarters personnel. 3. Communications section. 4. Firing battery headquarters.	Missile Battery 1. From battery headquarters—mess, maintenance, communication, and headquarters.
Battalion Headquarters 1. Battalion Commander (Lt Col). 2. Battalion Executive Officer (Maj). 3. Battalion Communications Officer (Capt). 4. Battalion S1 (Capt). 5. Battalion S2 (Capt). 6. Battalion S3 (Maj). 7. Battalion S4 (Capt). 8. Battalion Chaplain (Capt). 9. Battalion Surgeon (Capt). 10. Battalion Liaison Officer (Capt). 11. Battalion Motor Officer (Capt). 12. Battalion Recon-Survey Officer (Lt).	1. Group Commander (Col). 2. Group Executive Officer (Lt Col). 3. Group Communications Officer (Maj). 4. Group S1 (Maj). 5. Group S2 (Maj). 6. Group S3 (Maj). 7. 2 Group Liaison Officers (Capt). 8. Group Recon-Survey Officer (Capt). 9. 2 Group Assistant S1's (Capt). 10. Group General Supply Officer (WO). 11. Group Maintenance Officer (WO). 12. Group Chaplain (Capt). 13. Group Surgeon (Capt). 14. Group Sergeant Major (E9).	Engineer Company 1. To total strength—16 EM. 2. To maintenance platoon—maintenance repair section and 3 maintenance teams. 3. Augmentation liquid nitrogen supply section (3 enlisted men).	Engineer Company 1. From total strength—1 Officer. 2. From maintenance platoon—general repair, automotive repair, and engineer equipment repair sections.
13. Battalion Sergeant Major (E9).		1. To supply platoon—technical supply and nuclear weapons sections. 2. From supply section—general missile and fuel supply sections.	Ordnance Company 1. From total strength—1 Officer, 1 WO, and 30 enlisted men. 2. From supply section—general supply, special weapons, and missile and fuel supply sections. 3. Security platoon. 4. Signal maintenance section.

Figure 26. Additions and deletions to the old Redstone Group organization.